

SEO Dynamic Contact Angle Systems

SEO DCA 200 series Analyzers

The SEO DCA series 200 analyzers offer a powerful, and versatile approach to comprehensive understanding of the complex interactions at liquid-liquid and liquid-solid surfaces. Whether you need to improve adhesion, apply a coating, or modify a surface, a SEO DCA system provides the solutions for;

- Dynamic Contact Angle of general solid materials.
- Dynamic Contact Angle of a powders, Washburn Method.
- Surface / Interfacial Tension
- Surface energies, wettability, cleanliness and topographical homogeneity of solid sheets, films, and fibers.
- Dry materials absorption, wicking rate
- Surfactants analysis with the automatic / manual Critical Micelle Concentration, CMC, software.

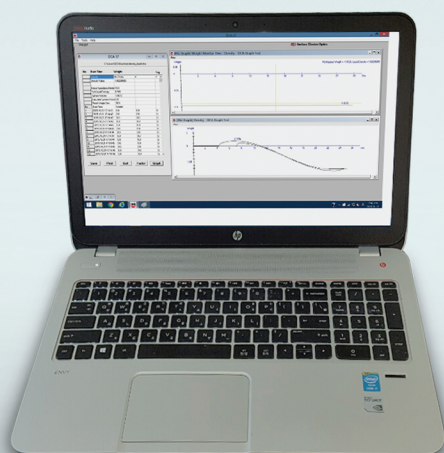
SEO Genesis-D Software

SEO Genesis-D is windows based software which accomplishes all DCA functions with ease. Using Wilhelmy Plate and DuNouy ring methods.

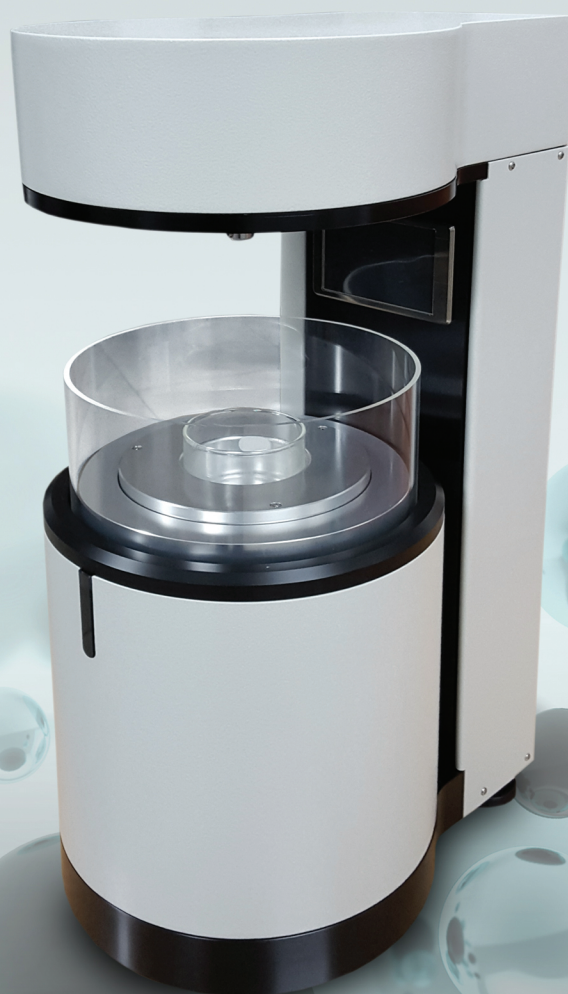
- Dynamic Contact Angle Measurement
- Surface tension Measurement to ASTM / DIN / ISO
- Interfacial Measurement
- Surface energies Measurement
- Surfactant studies (Critical Micelle Concentration, CMC) with optional accessory

SEO DCA Application

- Film / Fibers
- Powders
- Composites
- Adhesives
- Bio-Polymers
- Inks
- Paints
- Oil recovery
- Shampoos
- Cosmetics
- Detergents
- Pharmaceuticals
- Eye-Care products
- Moisture Barriers
- Semiconductor & Electronics
- LCD, OLED display



SEO DCA 200

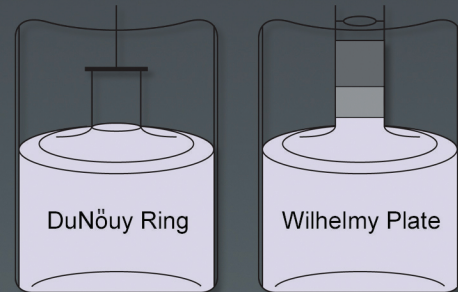


www.s-eo.com

SEO Genesis-D offers the best flexibility

The Genesis-D software is designed for all SEO DCA systems operated under the Genesis-d software. The DCA software allows method storage, development, real time, buoyancy correction and a complete range of analyses, including an automatic run mode. The SEO DCA software expands your analysis capabilities even further by offering like these;

- Critical Surface Tension - Zisman Plot.
- Surface Energies. (Geometric ,Harmonic, Lewis Acid/Base)
- Washburn Method.
- Density Measurement.
- Liquid Surface Tension components.
- Wicking rate measurement.
- Data can be exported as an Excel file, offering the highest flexibility.
- Data acquisition and data analysis can be performed automatically and / or manually according to method and setting.
- User can test CMC doser and stirrer and temperature accessory separately.



Technical Data

Model Specifications	DCA 200S	DCA 200A
Contact angle range	1- 180	○
Resolution (ug)	100 ug	○
Surface Tension Range (mN/m)	1-1000	○
Resolution (mN/m)	0.01	○
Max.Capacity (gram)	250	○

Measurement

Dynamic Contact angle	○	○
Surface Tension (Wilhelmy / DuNouy Ring)	○	○
Interfacial Tension	○	○
Surface free Energy	○	○
Powder Wettability (Washburn method)	Option	○
Zisman Plot	○	○
Density	Option	○
Wicking rate	○	○
CMC (Critical Micelle Concentration)	Option (Auto / Manual)	Option (Auto / Manual)
Fiber measurement	≥ 100 μm	≥ 100 μm
Data Output (Excell)	○	○
Calibration (automatic)	○	○

Measuring Unit

Sample stage range	110mm	○
Speed	1mm / min ~20mm / min	○

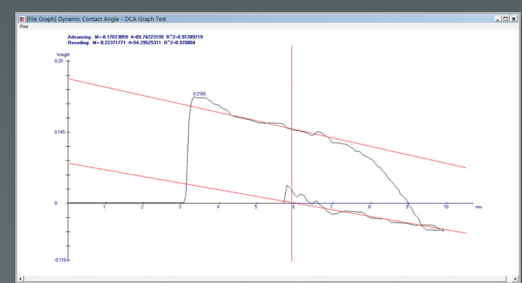
Temperature Control

Internal circulation Chamber	○	○
Tem. range	-35 °C to 150 °C	○
Stir	Option	○
Heat / Cool Water bath	Option	Option

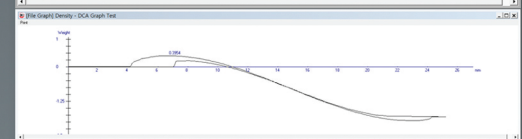
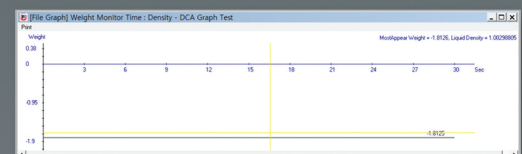
Others

Size (mm / inch)	320 (L) x 230 (D)x 560 (H)	○
	13 (L) x 9 (D) x 22 (H)	○
Weight (kg / lbs)	23 kg / 50 lbs	○
Electric Power	110V / 220V / 50Hz / 60Hz	○

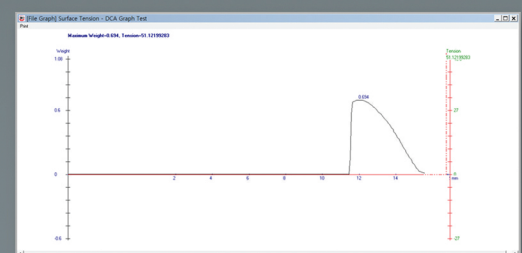
Specifications are subject to change without notice



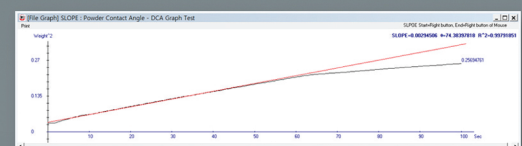
Dynamic Contact Angle (Advancing / Receding)



Two separate display areas show acquisition data and analysis data



Surface Tension by DuNouy Ring (ASTM)



Washburn Method for powder measurement



www.s-eo.com

SEO (Surface Electro Optics)

#946, Kosekdong, Suwon City, Kyunggido, 441-813, Korea

Phone : +82.31.298.9561 Fax : +82.31.298.9565 E-mail : seo@s-eo.com